

New Foreign National Acceptance System  
Starts April 1, 2019!



# A New Status of Residence “Specified Skilled Worker” has been created

This is a system to accept foreign nationals that have a certain level of expertise and skill and can begin work immediately in response to circumstances of serious labor shortages.



## Specified Skilled Worker (i)\*

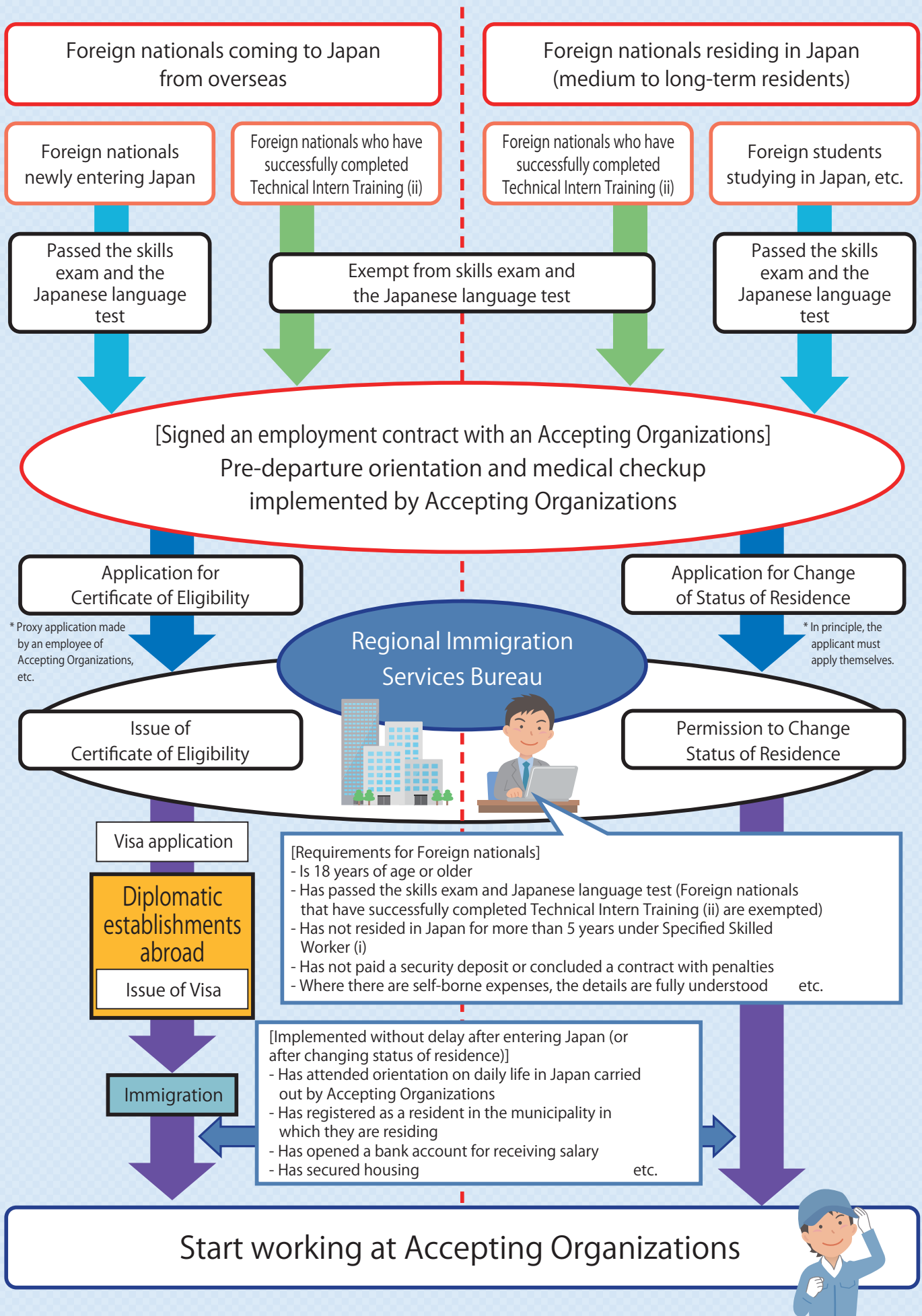
This is a status of residence applicable to foreign nationals who work in jobs that require **considerable knowledge of or experience in Specified Industry Fields**

- Period of stay: Renewed annually, every 6 months or every 4 months, for a **maximum stay of up to 5 years in total**
- Skill Standards: Confirmed by exams, etc. (those who have successfully completed Technical Intern Training (ii) are exempt from exams, etc.)
- Japanese Language Level: Proficiency in Japanese language required in daily life and at workplace need to be confirmed by exams, etc. (those who have successfully completed Technical Intern Training (ii) are exempt from exams, etc.)
- Accompanied by family members: Basically not permitted.
- **Eligible for Support** by Accepting Organizations or Registered Support Organizations

\* The “Specified Skilled Worker” has two types, Specified Skilled Worker (i) and Specified Skilled Worker (ii). Specified Skilled Worker (ii) is a status of residence for foreign nationals engaged in jobs that require **proficient skills in Specified Industry Fields**.

Immigration Services Agency of Japan

# Overview of Procedure for Accepting Specified Skilled Workers (i)



## Specified Industry Fields and Jobs

Specified Industry Fields	Competent Ministry or Agency of Industry Fields	Jobs to Engage in
1	Ministry of Health, Labour and Welfare	<ul style="list-style-type: none"> <li>• In addition to Nursing care (assistance with bathing, feeding and excretion responding to the physical and mental condition of the user), other related support services (assistance with recreation and functional training, etc.)</li> </ul> Note: Visiting services are not included (1 test category)
2		<ul style="list-style-type: none"> <li>• Interior building cleaning</li> </ul> (1 test category)
3	Ministry of Economy, Trade and Industry	<ul style="list-style-type: none"> <li>• Casting • Metal press • Finishing • Welding</li> <li>• Forging • Factory sheet metal work • Machine inspection</li> <li>• Die casting • Plating • Machine maintenance</li> <li>• Machining • Aluminum anodizing • Painting</li> </ul> (13 test categories)
4		<ul style="list-style-type: none"> <li>• Casting • Painting • Finishing • Electrical equipment assembling • Welding</li> <li>• Forging • Iron work • Machine inspection • Printed wiring board manufacturing</li> <li>• Industrial packaging • Die casting • Factory sheet metal work • Machine maintenance</li> <li>• Plastic molding • Machining • Plating • Electronic equipment assembling • Metal press</li> </ul> (18 test categories)
5		<ul style="list-style-type: none"> <li>• Machining • Finishing • Printed wiring board manufacturing • Industrial packaging</li> <li>• Metal press • Machine maintenance • Plastic molding</li> <li>• Factory sheet metal work • Electronic equipment assembling • Painting</li> <li>• Plating • Electric equipment assembling • Welding</li> </ul> (13 test categories)
6	Ministry of Land, Infrastructure, Transport, and Tourism	<ul style="list-style-type: none"> <li>• Formwork construction • Earthwork • Interior finishing/material mounting</li> <li>• Heat-retention and cool-retention • Plastering • Roofing • Scaffolding</li> <li>• Spray urethane insulation • Concrete pumping • Telecommunications</li> <li>• Carpentry • Offshore civil engineering • Tunnel and Propulsion</li> <li>• Reinforcement construction • Plumbing • Construction machinery and construction</li> <li>• Reinforcing bar joints • Building sheet metal work</li> </ul> (18 test categories)
7		<ul style="list-style-type: none"> <li>• Welding • Finishing</li> <li>• Painting • Machining</li> <li>• Iron work • Electrical equipment assembling</li> </ul> (6 test categories)
8		<ul style="list-style-type: none"> <li>• Automobile everyday inspection and maintenance, Regular inspection and maintenance, Disassembly</li> </ul> (1 test category)
9		<ul style="list-style-type: none"> <li>• Airport ground handling (ground driving support services, baggage and freight handling services)</li> <li>• Aircraft maintenance (maintenance of aircraft and equipment, etc.)</li> </ul> (2 test categories)
10		<ul style="list-style-type: none"> <li>• Providing accommodation services, such as working at the front desk, planning/public relations, hospitality, restaurant services</li> </ul> (1 test category)
11	Ministry of Agriculture, Forestry and Fisheries	<ul style="list-style-type: none"> <li>• General crop farming (cultivation management, collection/shipping/sorting of agricultural products, etc.)</li> <li>• General livestock farming (breed management, collection/shipping/sorting of livestock products, etc.)</li> </ul> (2 test categories)
12		<ul style="list-style-type: none"> <li>• Fishery (production and repair of fishing gear, search for marine animals and plants, operation of fishing gear and machinery, capture of marine animals and plants, processing and storage of catch, ensuring health and safety, etc.)</li> <li>• Aquaculture industry (production, repair and management of aquaculture materials, breed management, collection (harvesting) and processing of aquaculture animals and plants, ensuring health and safety, etc.)</li> </ul> (2 test categories)
13		<ul style="list-style-type: none"> <li>• General food and beverage manufacturing (manufacturing/processing and health and safety of food and beverages (excluding liquor))</li> </ul> (1 test category)
14		<ul style="list-style-type: none"> <li>• General restaurant industry (food and beverage processing, customer service, store management)</li> </ul> (1 test category)

### FAQ

**Q** Is educational background in the home country required?

**A** There are no particular requirements in regard to applicants' educational backgrounds. However, there is a minimum age requirement for specified skilled workers – they must be over 18 years of age.

**Q** What are the areas in which Specified Skilled Worker (ii) are recognized?

**A** This is recognized for the “Construction” and “Shipbuilding and Ship Machinery” industries

**Q** When transitioning from Technical Intern Training (ii) to Specified Skilled Worker (i), how much relevance is required between the activities of the technical intern training and the activities of the specified skilled worker?

**A** The required relevance between Specified Skilled Worker activities in which foreign nationals are engaged and the Technical Intern Training (ii) activities is specified in the application guidelines for each field. Please check the guidelines.

Inquire with the following for details about the general system, immigration and residency procedures and registered support organizations, etc.

Ministry of Justice

Office Names	Address	Contact Details
Public Relations Section, General Affairs Division, Immigration Services Agency of the Ministry of Justice	1-1-1 Kasumigaseki, Chiyoda-ku, Tokyo	03-3580-4111
General Affairs Division Sapporo Regional Immigration Services Bureau	Sapporo Third Joint Government Bldg., 12 Odori-Nishi, Chuo-ku, Sapporo City, Hokkaido	011-261-7502 (main)
General Affairs Division Sendai Regional Immigration Services Bureau	Sendai Second Legal Affairs Joint Government Bldg., 1-3-20 Gorin, Miyagino-ku, Sendai City, Miyagi	022-256-6076 (main)
Business and Employment Inspection Department No. 3 Tokyo Regional Immigration Services Bureau	5-5-30 Konan, Minato-ku, Tokyo	0570-034-259 (ext. 330)
General Affairs Division Yokohama District Immigration Services Office, Tokyo Regional Immigration Services Bureau	10-7 Torihama-cho, Kanazawa-ku, Yokohama City, Kanagawa	045-769-1720 (main)
Nagoya Regional Immigration Services Bureau - Acceptance/Social Integration related → Inspection Management Department - "Specified Skilled Worker" Residential Status related → Business and Employment Inspection Department No. 2	5-18, Shoho-cho, Minato-ku, Nagoya City, Aichi	Inspection Management Department 052-559-2112 Business and Employment Inspection Department No. 2 052-559-2110
General Affairs Division Osaka Regional Immigration Services Bureau	1-29-53 Nankou Kita, Suminoe-ku, Osaka City, Osaka	06-4703-2100 (main)
General Affairs Division Kobe District Immigration Services Office Osaka Regional Immigration Services Bureau	Kobe Local Joint Government Bldg., 29 Kaigan-dori, Chuo-ku, Kobe City, Hyogo	078-391-6377 (main)
Status Department Hiroshima Regional Immigration Services Bureau	Hiroshima Legal Affairs Government Bldg., 2-31 Kami-hacchobori, Naka-ku, Hiroshima City, Hiroshima	082-221-4412
General Affairs Division Takamatsu Regional Immigration Services Bureau	Takamatsu Legal Affairs Joint Government Bldg. 1-1 Marunouchi, Takamatsu City, Kagawa	087-822-5852 (main)
General Affairs Division Fukuoka Regional Immigration Services Bureau	Fukuoka Legal Affairs Government Complex No.1 3-5-25 Maizuru, Chuo-ku, Fukuoka City, Fukuoka	092-717-5420 (main)
Status Division Naha District Immigration Services Office Fukuoka Regional Immigration Services Bureau	Naha First Local Joint Government Bldg., 1-15-15 Higawa, Naha City, Okinawa	098-832-4186

- Please see the Ministry of Justice website for more information about the "Specified Skilled Worker" Residential Status.  
→ Search for "Ministry of Justice Specified Skilled Worker"

Please see the Ministry of Justice website for information on Specified Industry Fields

